

A graphic featuring four arrows pointing in different directions, stacked vertically. The top arrow is green and points up and to the right, labeled 'EVOLVE'. The second arrow is yellow and points up and to the left, labeled 'ADAPT'. The third arrow is blue and points down and to the right, labeled 'CHANGE'. The bottom arrow is red and points down and to the left, labeled 'SURVIVE'. The arrows are set against a white background with teal and orange abstract shapes.

By

(MD, MPH, Associate professor of ECC, president of ESEP)





OUTLINE

- Introduction
- Professional growth
- System & Resource changes
- Opportunity & challenges
- Way forward



Introduction

EM

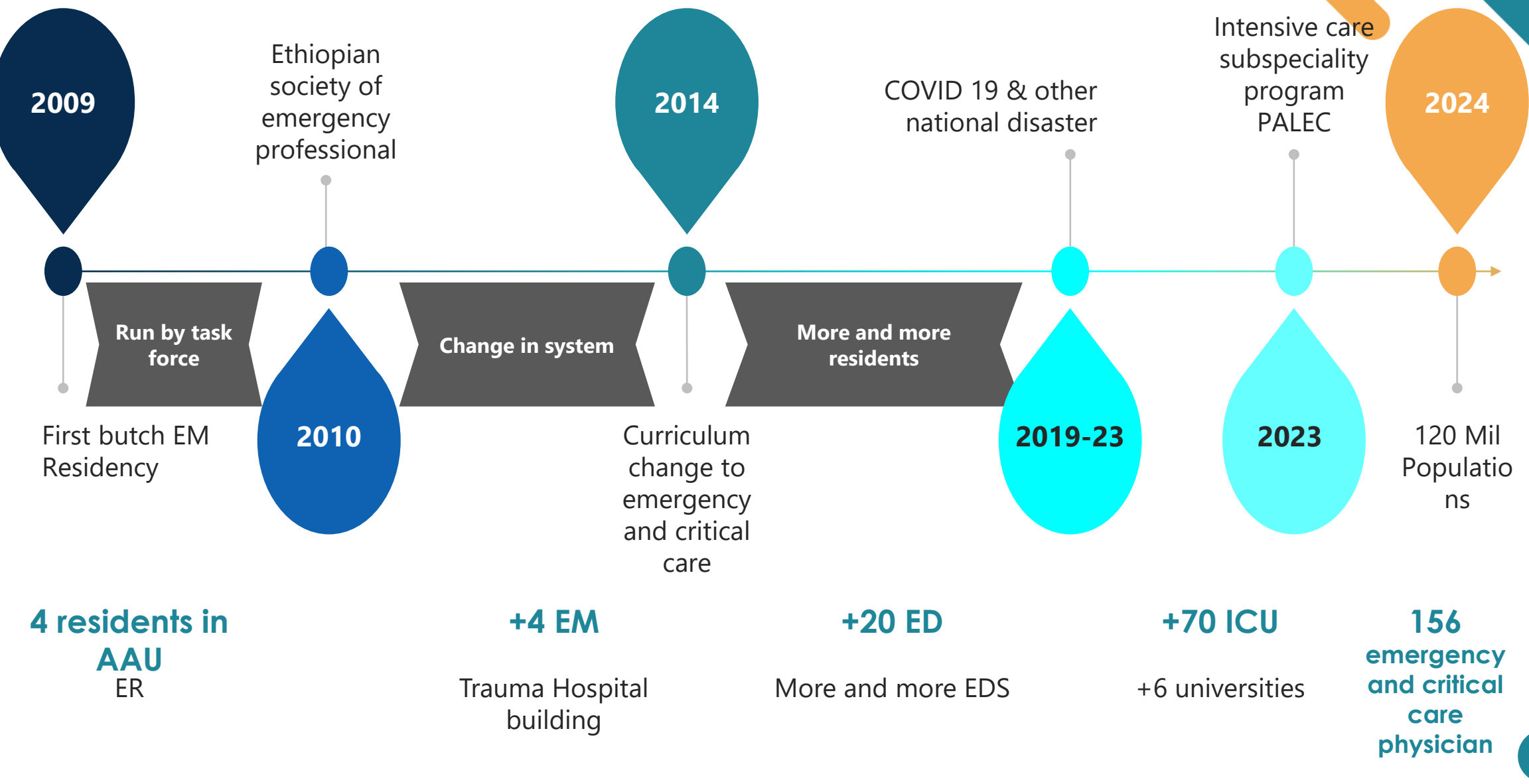
- ❖ Focuses on the prompt diagnosis, treatment, and management of acute illnesses and injuries.
- ❖ As a distinct specialty began in the 1960s and 1970s,
- ❖ Evolved significantly over the years,
- ❖ The specialty continues to grow and develop.



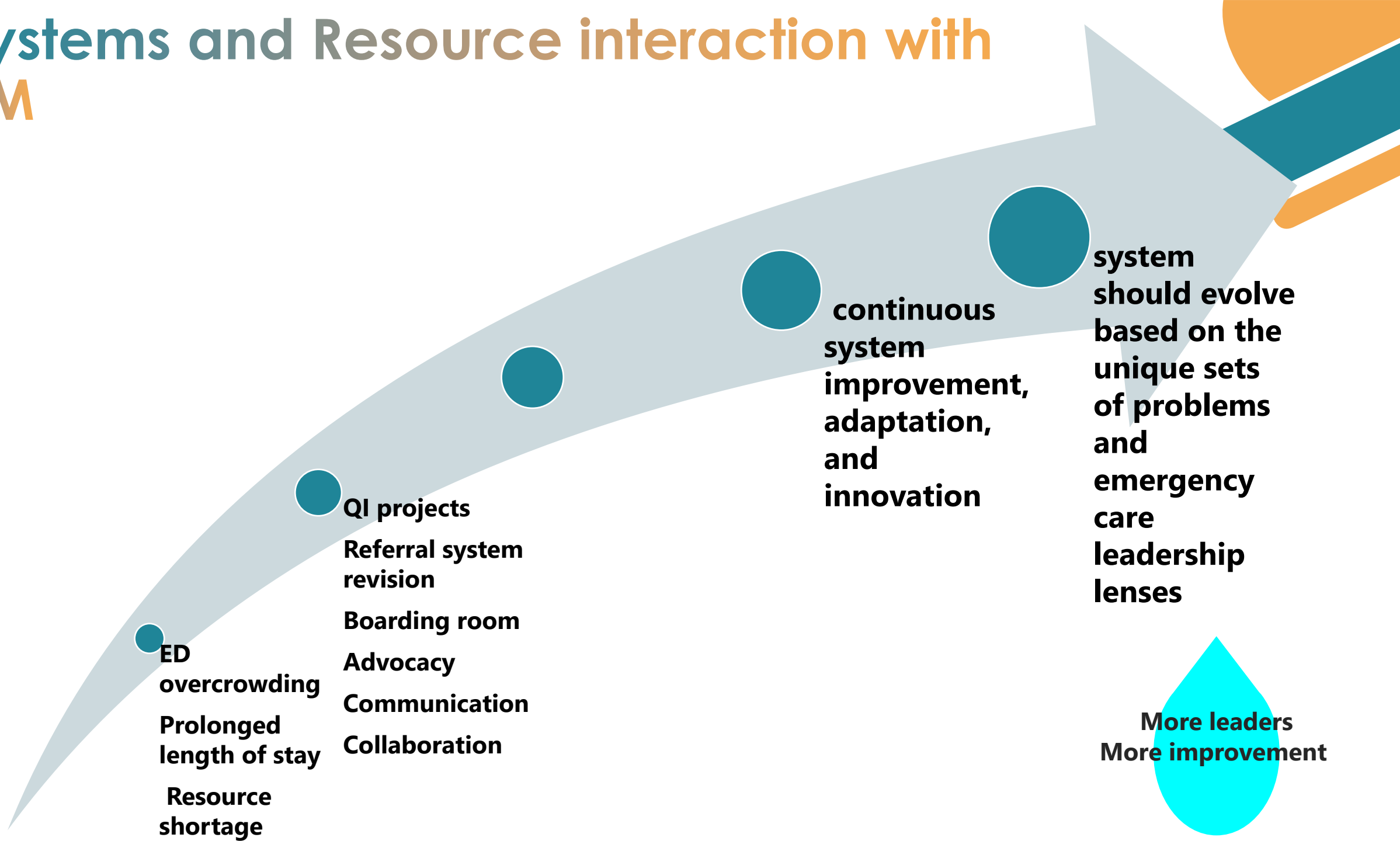
EM in Ethiopia



Emergency and Critical Care Medicine professionals' growth and team building



Systems and Resource interaction with EM



Stakeholders involved in ECCM development

National and
international
universities

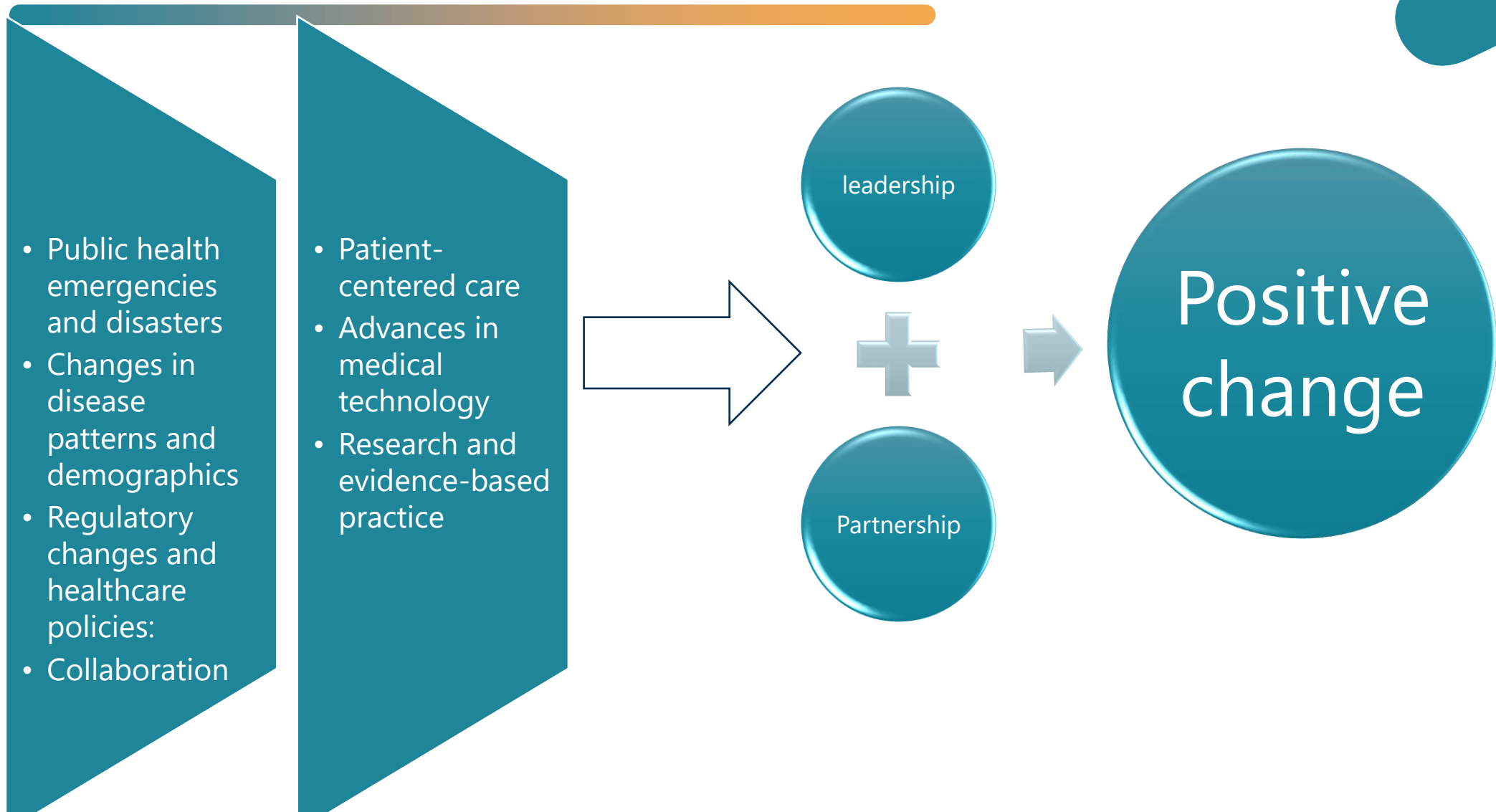
MOH-Ethiopia

NGOs

ESEP



Factors for EM adaptation and changes





Challenges



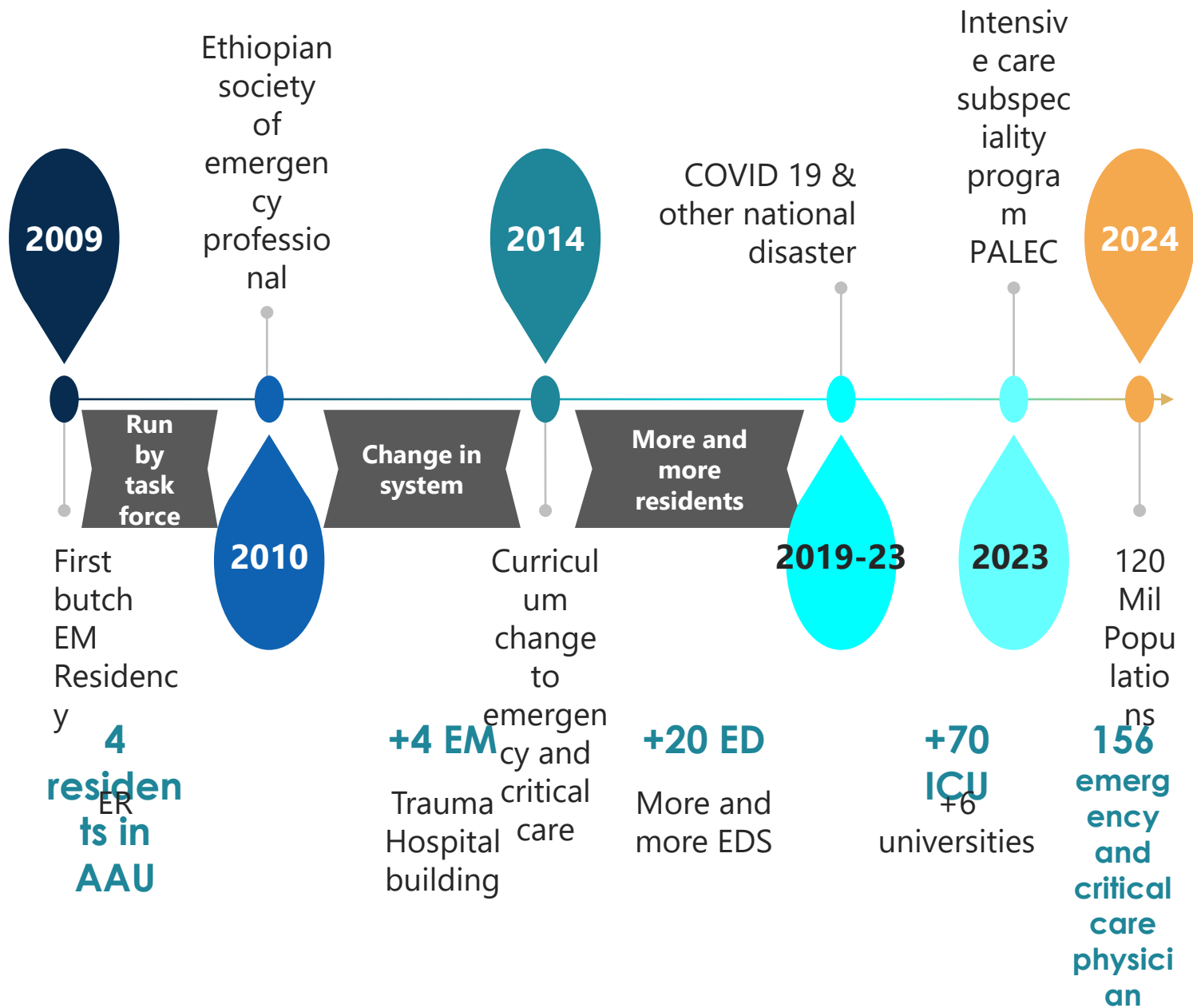
- ❖ **limited career path**
- ❖ **Resource**
- ❖ **Limited partners**
- ❖ **Limitation of policies**



Way forward

- Enhance partnership, leadership
- More research and evidence generation
- Improve ED & career path

Summary



THANK YOU !



Woldesenbet Waganew

Email;

woldegessam@mail.com

Phone; +251932456995